

SOUTH ISLAND NEW ZEALAND



N Z South
Island
Nelson
Marlborough
North Canterbury
Central Sth Island
West Coast
Otago
Southland





Getting There

Passport only required

Book Flights approx \$500 return pp

Accommodation \$100-130 /day can be less

Fishing license \$162 non resident

Car Hire \$40-60/day average vehicle

Driving License Aussie license is required

Campervan approx 150 /day restricted accesss
to some rivers etc

Food \$20 a pub meal always great food





Accommodation Types , High End Lodges , Pubs , parks
campervans etc



Best Value is Holiday Park Cabins

Equipment

Rods 5# /6# preferably fast /medium fast action

Lines Camo type eg Airflo Bandit taper brown/green

Flies must consist of commercially available material

Cloths Wader / thermals (wet wading) Boots non felt
wet weather gear sun and midge
protection . Gloves, buff , hat etc

Polaroid Sunglasses sight fishing and protection

Mapping and location books Kent , F&G info

Weather 4 season in 1 day anytime of the year

Size 14

Emerger Type



5 Essential fly types for NZ



Blowfly

Duns



Searching fly
eg Stimulator



Various Nymphs

Jan Feb Antarctica blast
10 degrees at best



Sometimes It all comes together

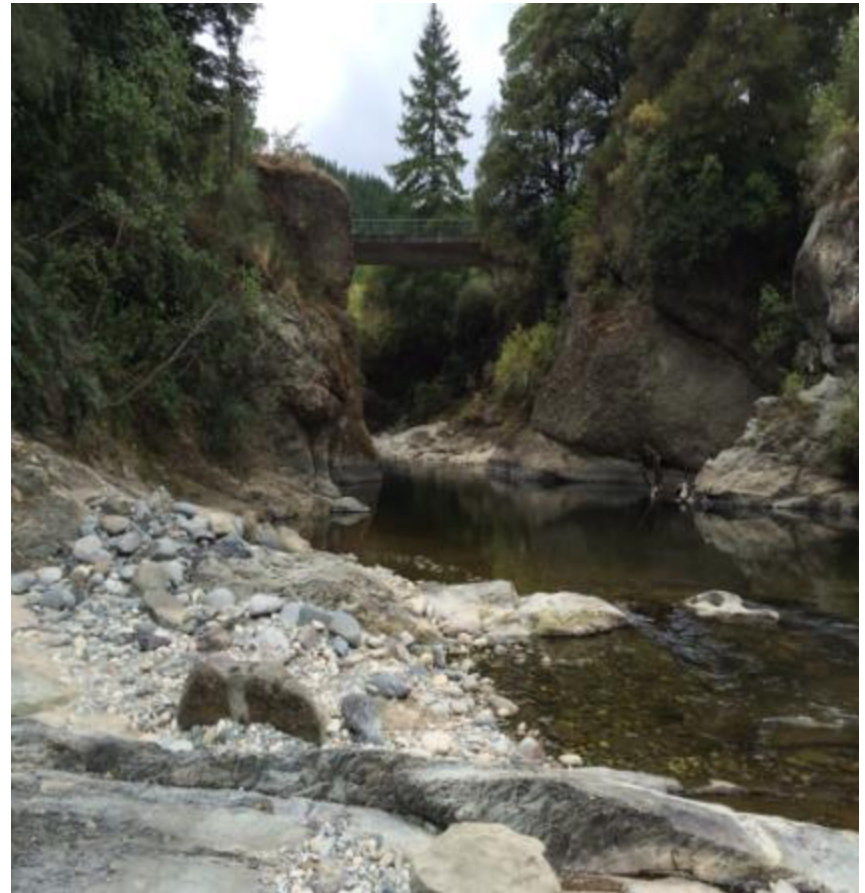


Types of Fishing Water

Lakes



Rivers and Streams



Types of Fishing Water

Braided Rivers

Spring Creeks



BRAIDED RIVERS



SPRING STREAMS crystal clear with spooky fish



Spring Creeks , Berry & Mary Burn etc



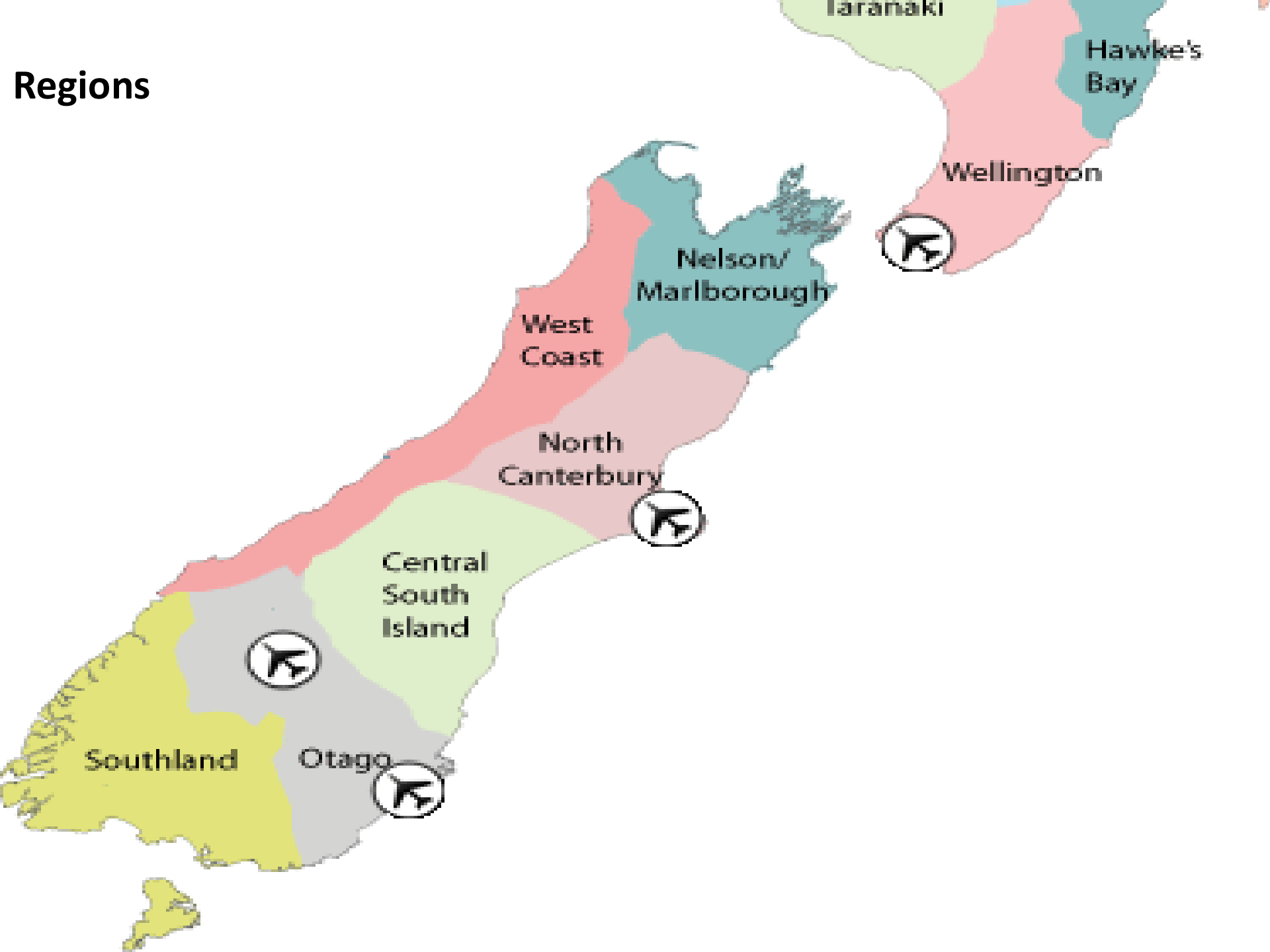
The Small fish was about 2lb maybe more



Spring stream

the water maybe 10 foot deep

Regions



Must Do Rivers and Streams Northern South Island

Nelson Marlborough *Aorere Motueka Rai Pelorus Baton Wankapeka*

Nelson Lakes *Sabine D'urville Wairau Travers*

Hamner Springs *Clarence Acheron Upper Waiau Waiau Hope Boyle Lake
Sumner Hurunui*

Murchison *Mangles Buller Matiri Matakita Owen Muriu Upper Grey*

Reefton /West Coast *Inangahua Larrys Waitahu Lower Grey Moonlight
Spring Creeks (Duck Murray Berry La Fontaine Bruce
Waitangitona) plus remote rivers*

Haast *Haast , Turnbull ,Jackson Cascade*



Must do Rivers and Streams Southland and Otago

Queenstown

*Caples Greenstone Rees Dart Diamond Creek
Wilkins Young ,Makarora Dingle Burn Timaru Clutha*

Gore

Matura Waikaia Dome Burn

Lumsden

Oreti Aparima Braxton Burn Hamilton Burn Windley

Te Anau

*Eglinton Holleyford Upukerora Whitestone Mararoa Upper Oreti Nevis Waiau
Clinton Worsley*

Planning your locations

Fish and Game Access location brochures

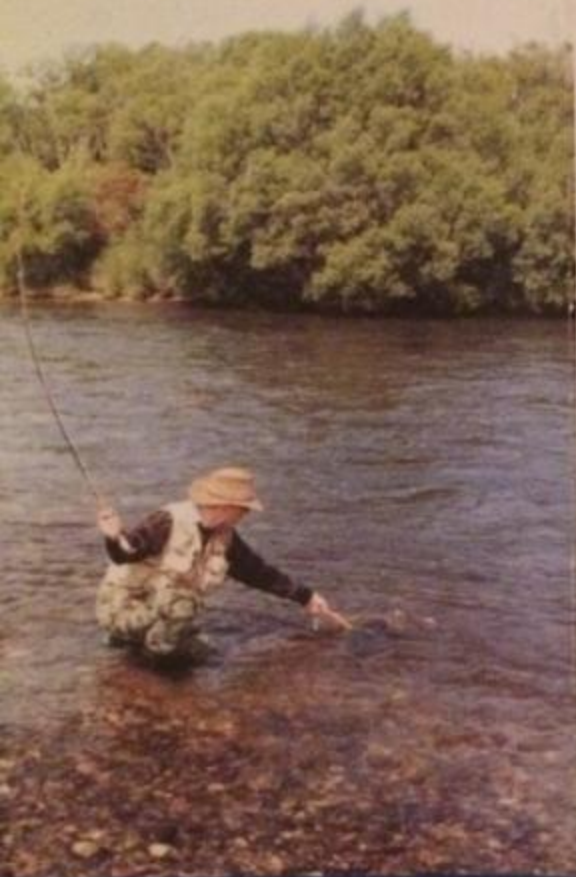
Computer apps , Maps , Google Earth

Fish and Game access locations utilising

WAMs (walking access maps on F@Game site)



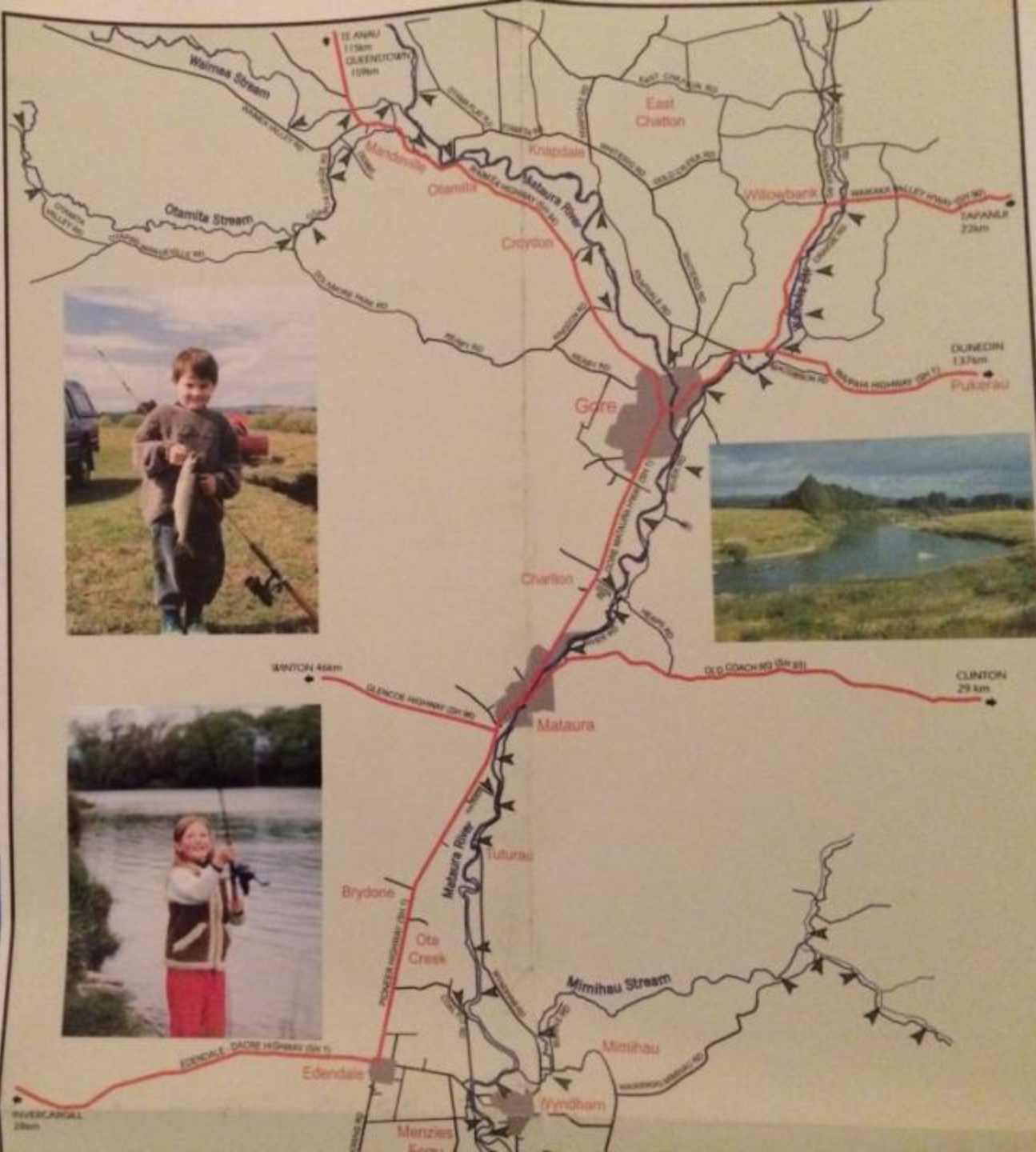
Mataura River Anglers Access

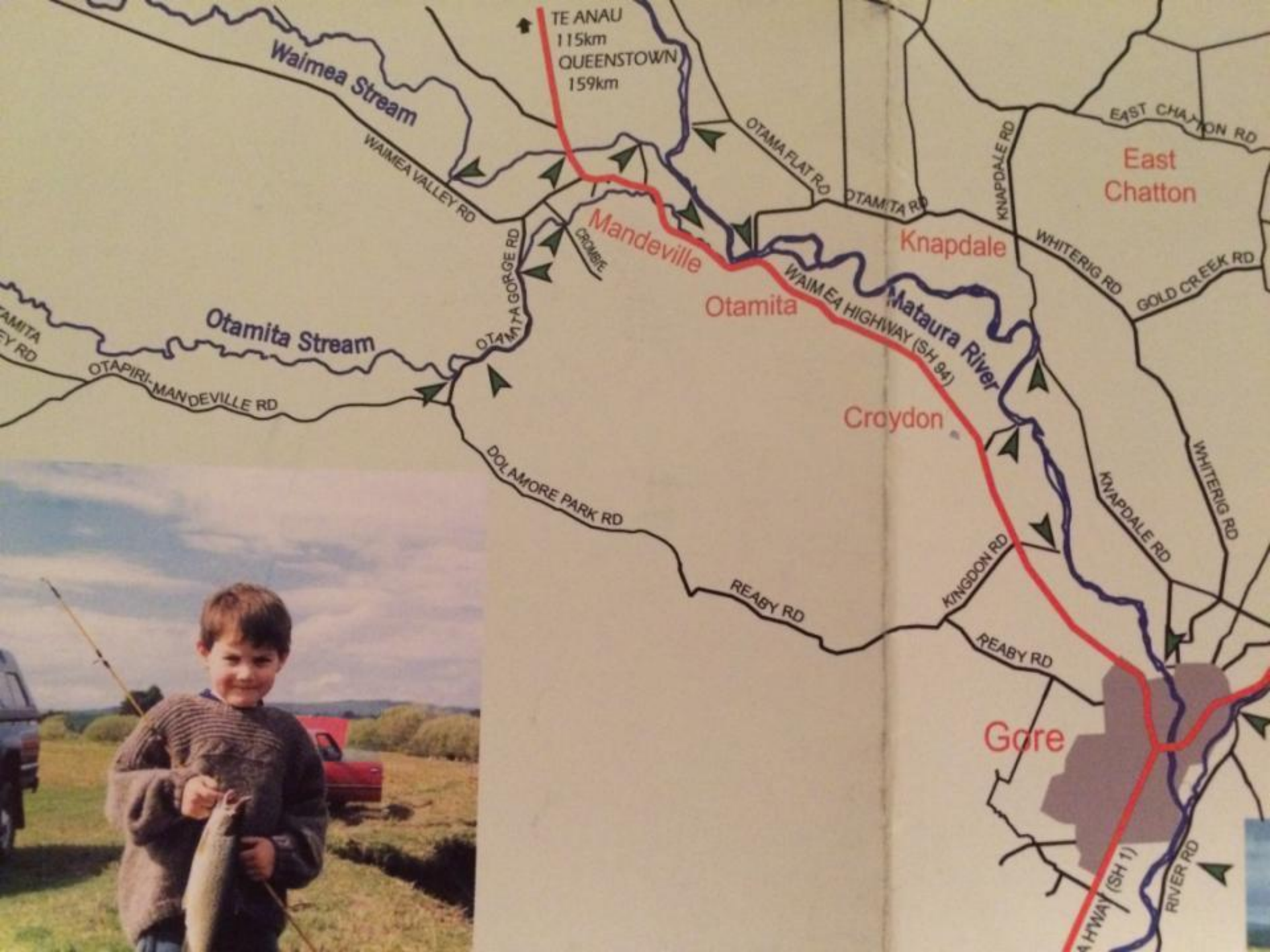


Fish & Game

Southland Region

Logic of the Mataura





ake
Anau

Upukerora Rd

Sinclair Rd

Upukerora River

Dale Rd

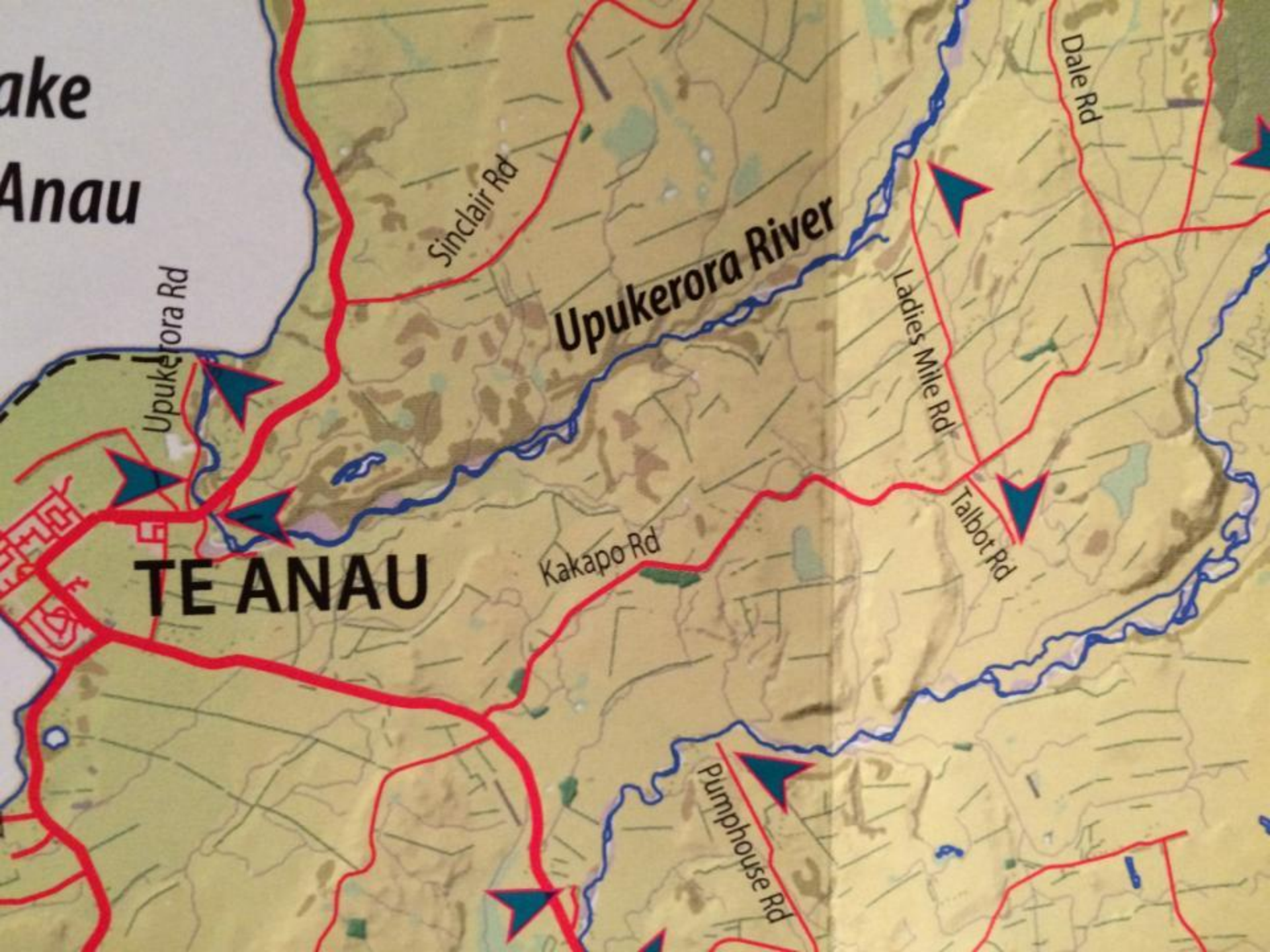
Ladies Mile Rd

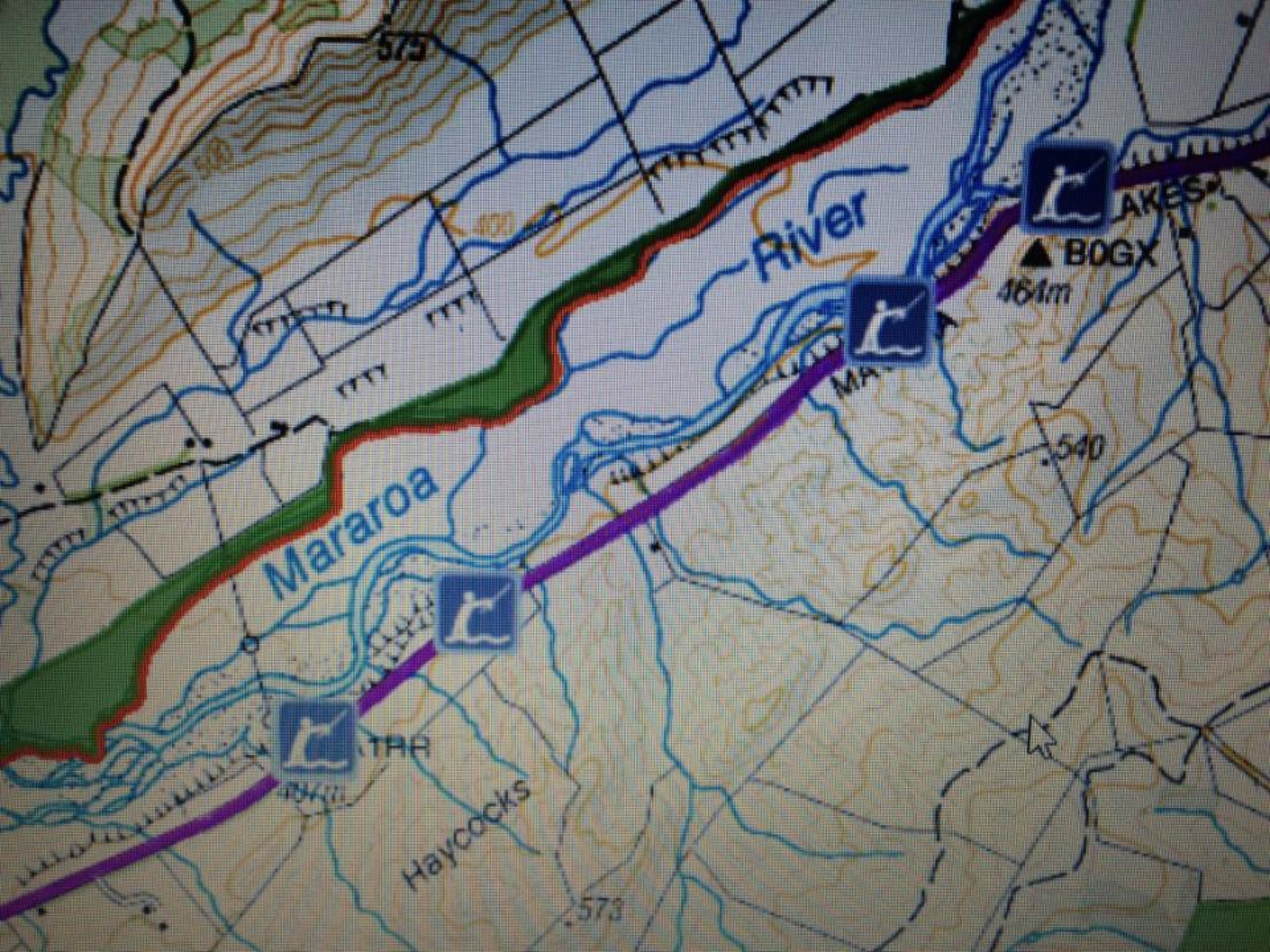
Talbot Rd

Kakapo Rd

TE ANAU

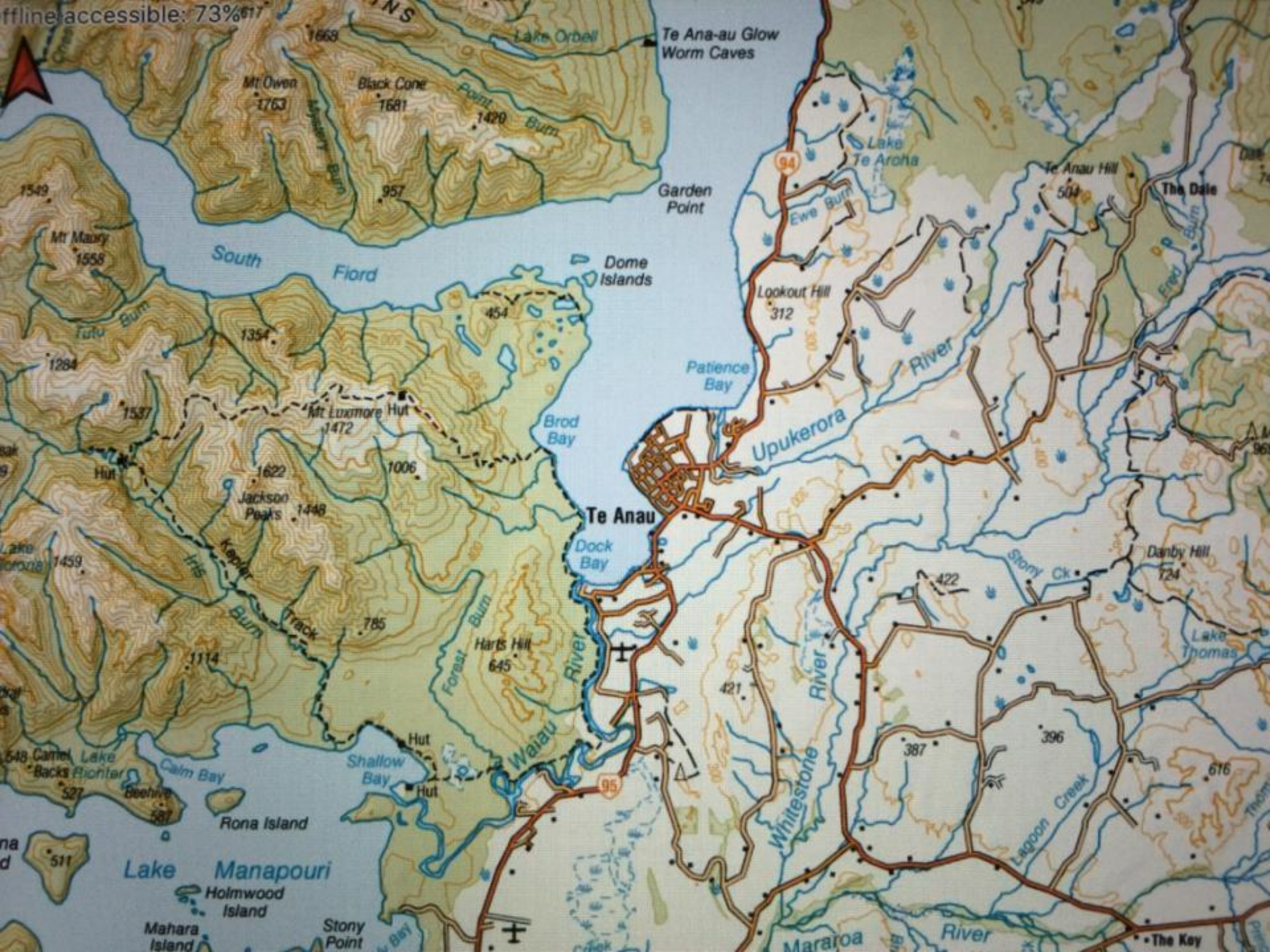
Pumphouse Rd





Feature Type	Fishing spot
Title	Te Anau Basin - Access Point #MR11
Owner	Fish & Game New Zealand, Southland Region
Description	Track down hill to gate to riverbed
Conditions	
Last Updated	10/12/2013, 1:53 AM
Feature URL	More info

Offline accessible: 73%



Doc Huts





Wet Wading backcountry streams

Pests to be avoided

Midges (sand flies) can have reaction to bites

European Wasps (you will here them)



NZ Has some
prickly
bushes)



What NZ Hasn,t Got



Mapping and location data links

Mapping App
New Zealand Topographic

Nelson .Fishandgame.org.nz
Click on regions and select map on that page
Access Pamphlets PDR File
Interactive WAMs maps

Google Earth

The End ,Thank You



Fishing Areas

All Very Weather dependant , However the Alps provide some protection from prevailing weather

- Nelson base
- Nelson Lakes D'Urville Sabine
Travers Wairau
- *Motueka , Baton Wangapeka , Rai*
- Murchison Reefton base
- *Mangles Inangahua Muruia Grey*
- Hokitika / Hari Hari base
- Spring streams Duck Murray
Berry La Fontaine Waitangitona
- Haast base
- *Haast , Turnbull Jackson Cascade*
- South Westerly protected
- Hamner Springs base
- *Clarence Acheron upper Waiau
Hope Boyle Lake Sumner Hununui*
- MacKenzie Country Twizel
base
- *Tekapo , Gray Mary Burn Ahuriri
Tasman Lake Benmore*
- Southland /Otago
- *Te Anau /Gore base*
- *Eglinton , Oreti Mararoa
Aparima Matura Greenstione
Caples*